

Tutorial - "public_html"

Introduction:

With an RCI account, you are also allotted a certain amount of web storage space which you can use, for example, to distribute material to a class. Before you can begin sharing files, though, you will need to set up a certain folder on your account, called "public_html."

"public_html" is the default name for directories on all Rutgers systems that will include files to be shared over the web, which can be loaded up in any web browser. The "public" states that the directory will be available to anyone via a web browser, and the "html" denotes the fact that web pages and other files will be contained there-in.

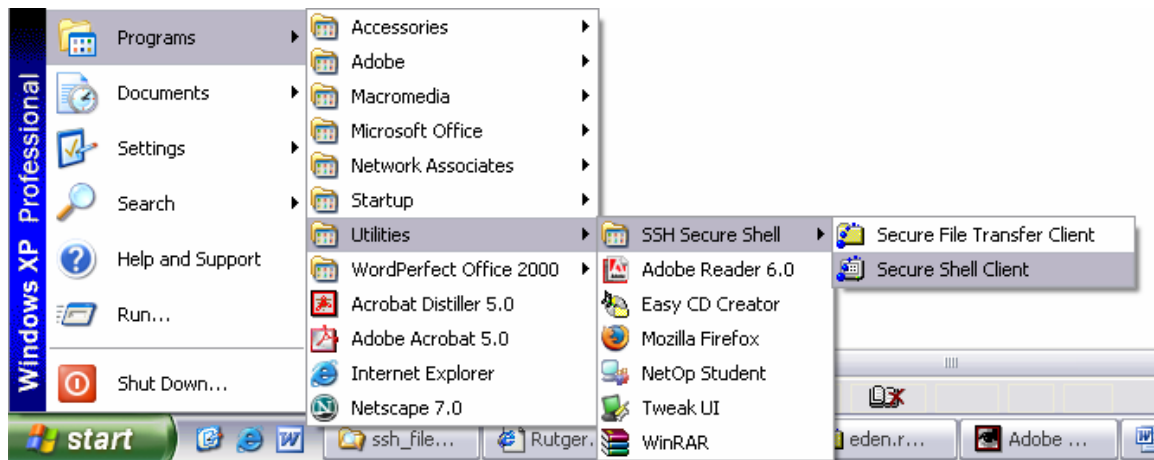
We can set up this directory in one of two ways in either of the SSH Secure Shell programs. If you prefer to do it via a "command-line" interface, you can use the command-line terminal window. If you prefer to do it via a graphical user interface, you can do it via the Secure File Transfer Client. This tutorial will explain both; pick whichever one you feel suits you best.

Command Line:

There are two ways to set up your "public_html" directory within SSH. The "command line" version will be familiar to those with any UNIX experience.

Opening the Program:

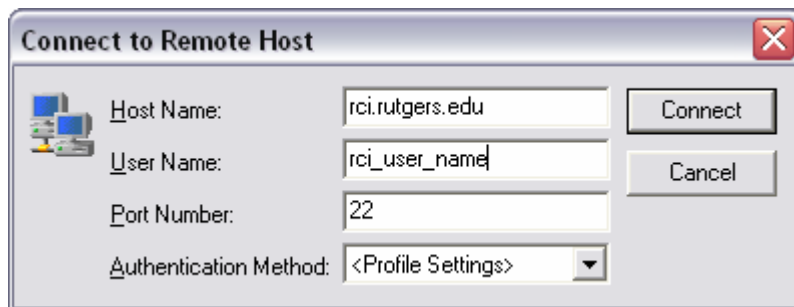
From the "Start" menu, navigate through the "Utilities" >> "SSH Secure Shell" folders, and click "Secure Shell Client."



Once the program is open, you'll need to connect to your RCI space. Click the "Quick Connect" button located near the upper-left.



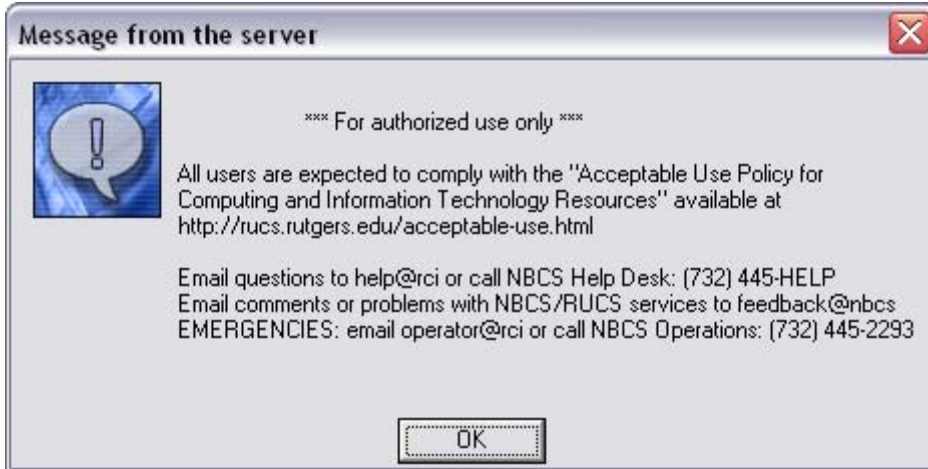
A new window called "Connect to Remote Host" will appear, prompting you for user information. Enter in "rci.rutgers.edu" into the box next to "Host Name." Enter your RCI user name into the box next to "User Name." Everything else can stay as-is; when you're done, click "Connect."



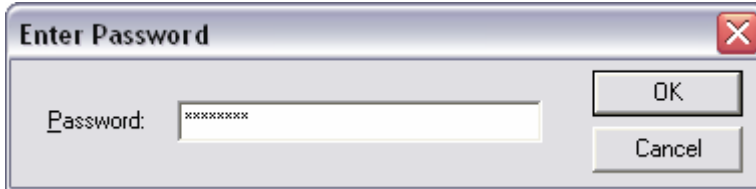
If you are connecting for the first time, a new window called "Host Identification" may appear. Just click "Yes" and continue on.



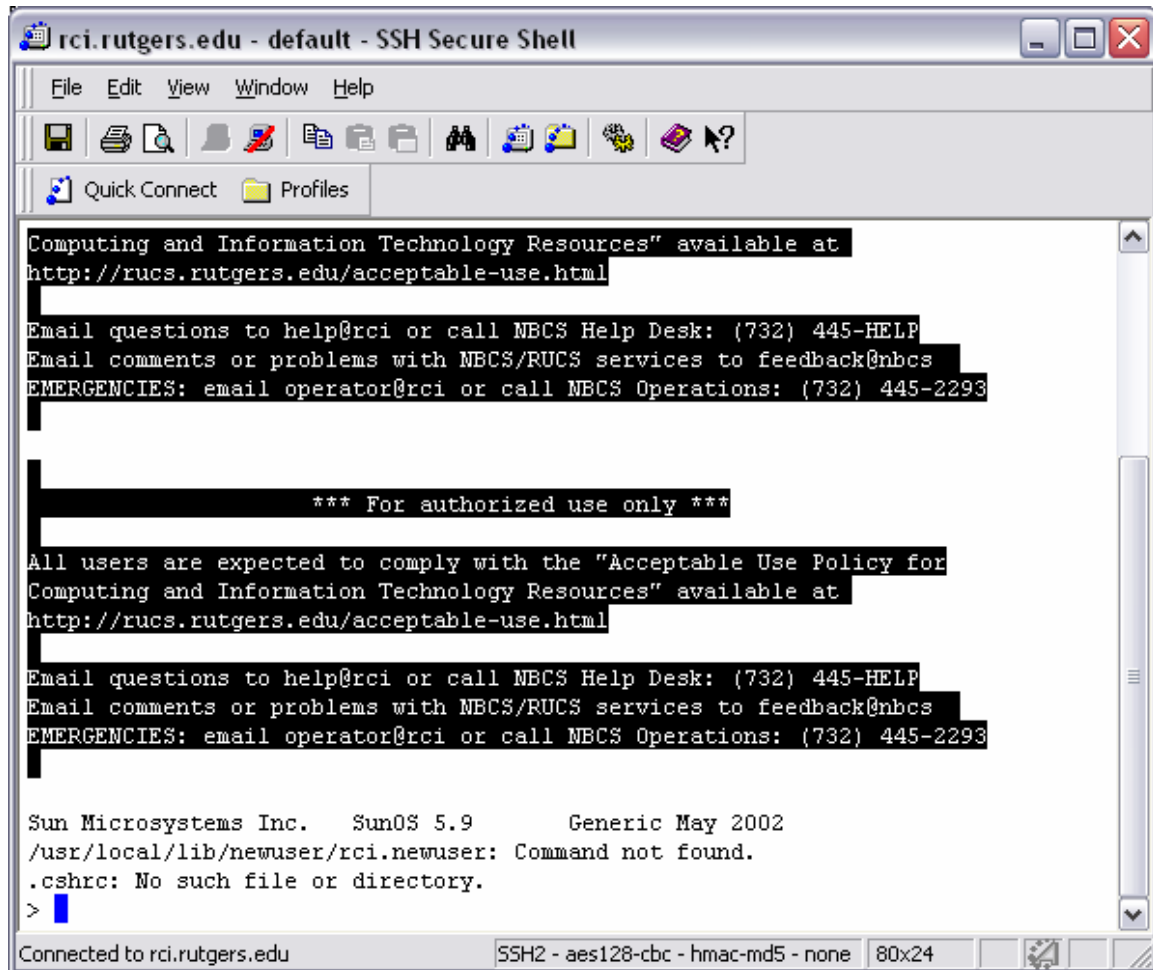
Another window will appear, welcoming you to the server. You will also be reminded that you must follow the "Acceptable Use Policy For Computing and Information Technology Resources." Click "OK" to continue.



Another window will appear, prompting you for your RCI password. Enter in your password and click "OK."



You will then be connected to your RCI space. The screen will look something similar to the set-up below:



```
rci.rutgers.edu - default - SSH Secure Shell
File Edit View Window Help
Quick Connect Profiles
Computing and Information Technology Resources" available at
http://ruc.s.rutgers.edu/acceptable-use.html
Email questions to help@rci or call NBCS Help Desk: (732) 445-HELP
Email comments or problems with NBCS/RUCS services to feedback@nbcs
EMERGENCIES: email operator@rci or call NBCS Operations: (732) 445-2293
*** For authorized use only ***
All users are expected to comply with the "Acceptable Use Policy for
Computing and Information Technology Resources" available at
http://ruc.s.rutgers.edu/acceptable-use.html
Email questions to help@rci or call NBCS Help Desk: (732) 445-HELP
Email comments or problems with NBCS/RUCS services to feedback@nbcs
EMERGENCIES: email operator@rci or call NBCS Operations: (732) 445-2293
Sun Microsystems Inc. SunOS 5.9 Generic May 2002
/usr/local/lib/newuser/rci.newuser: Command not found.
.cshrc: No such file or directory.
>
```

To set up your "public_html" directory, you will need to issue a series of textual commands to the "terminal" window. We will enter the first two commands one after another. Note that the terminal will not give you any indication that they have been entered correctly, so be careful in the entering process. Enter in each of the following two lines, pressing "Enter" on the keyboard after each line:

```
mkdir public_html
chmod a+rx public_html
```

The "public" and "html" parts should both be in all lower-caps, separated by the underscore character (attained by pressing Shift and the "minus" button, found next to the number 0 on the top keyboard row).

What you will now have done is first created your "public_html" directory, and then have set the permissions on it. You, as owner, are able to read, write, and execute from this folder (this includes renaming and deleting it entirely). Anonymous visitors (for example, anyone you simply give your URL to) may only read and execute data from this folder; they may not make any changes or alterations to it.

You can check the properties of your folder within the terminal window by entering the following command exactly as written, and then hitting "Enter" on the keyboard:

ls -ld public_html

It should return to you that the permissions are set to:

drwxr-sr-x

If it does not, re-enter the command: `chmod a+rx public_html`

You are now free to use the "public_html" directory as your main folder within your RCI storage space. Any files within "public_html" can be accessed at the following URL, where "username" is your RCI user account name:

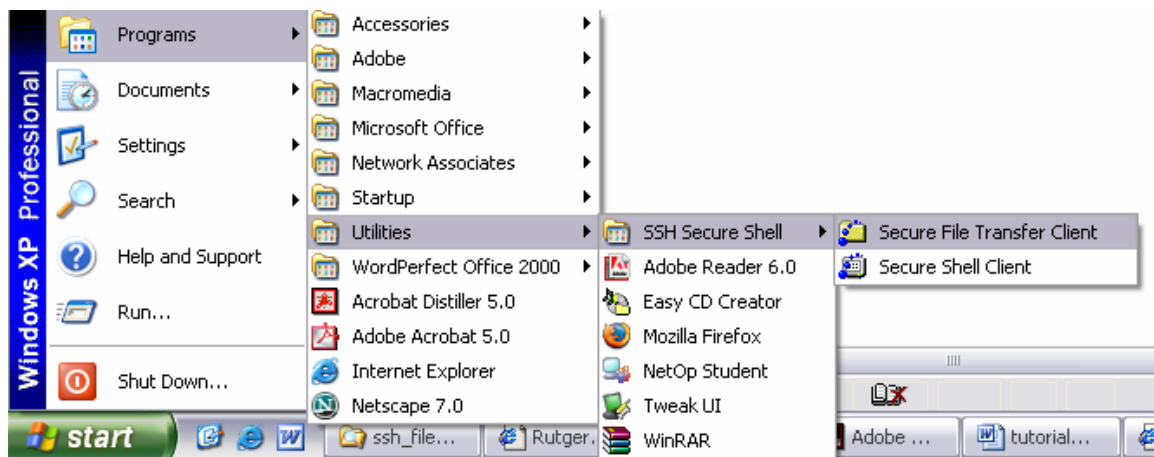
<http://www.rci.rutgers.edu/~username/>

GUI :

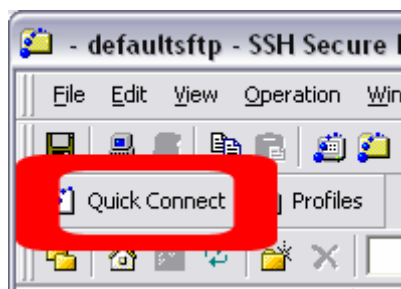
There are two ways to set up your "public_html" directory within SSH. The "GUI" version will be more comfortable for those with little experience working with programs at the command-line level.

Opening the Program:

From the "Start" menu, navigate through the "Programs" >> "Utilities" >> "SSH Secure Shell" folders, and click "Secure File Transfer Client."

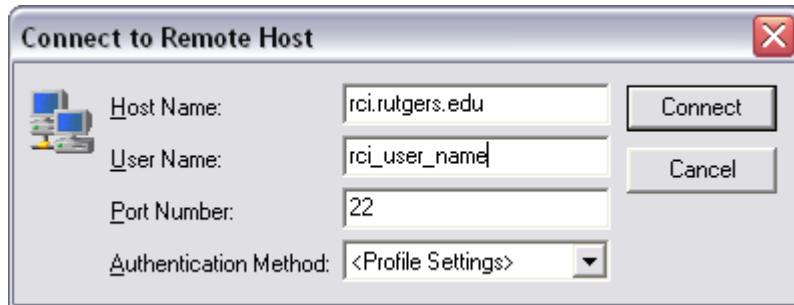


Click the "Quick Connect" button near the upper-left of the program.



A new window called "Connect to Remote Host" will appear, prompting you for user information. Enter in "rci.rutgers.edu" into the box next to "Host Name." Enter your

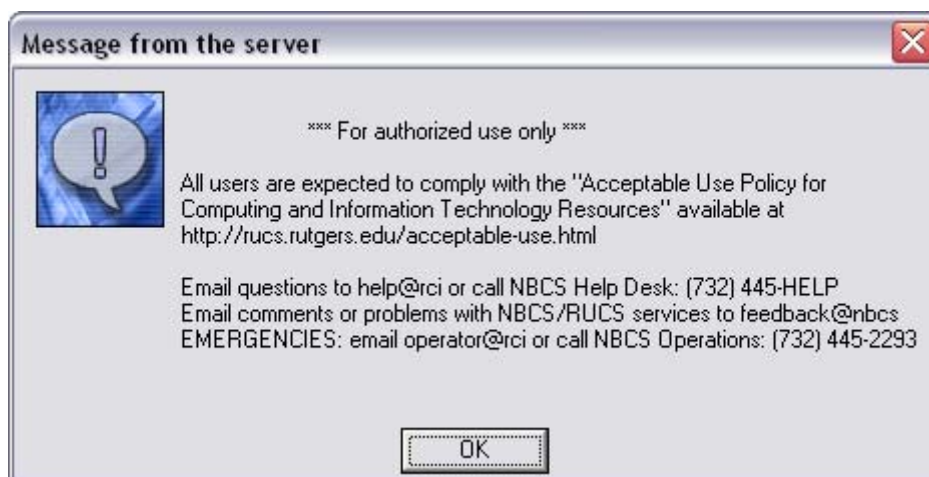
RCI user name into the box next to "User Name." Everything else can stay as-is; when you're done, click "Connect."



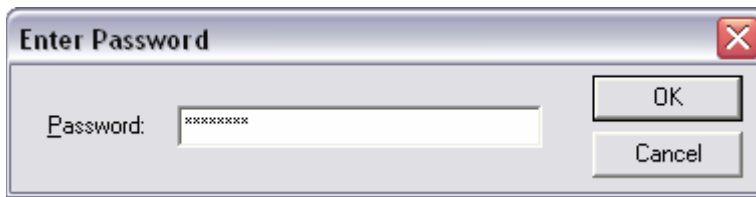
If you are connecting for the first time, a new window called "Host Identification" may appear. Just click "Yes" and continue on.



Another window will appear, welcoming you to the server. You will also be reminded that you must follow the "Acceptable Use Policy For Computing and Information Technology Resources." Click "OK" to continue.



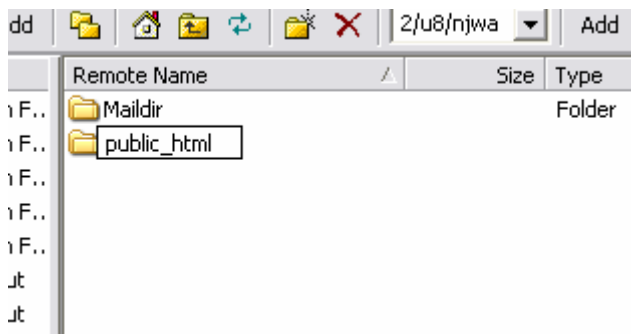
Another window will appear, prompting you for your RCI password. Enter in your password and click "OK."



Once you click "OK," you will be connected to your RCI storage space. You will need to create a new folder called "public_html" on the "Remote" side. To do this, you can either click the "New Folder" button...



... or right-click over on the "Remote" side in the blank area, and select "New Folder" from the drop-down menu. A new folder will appear, prompting you to enter a name.

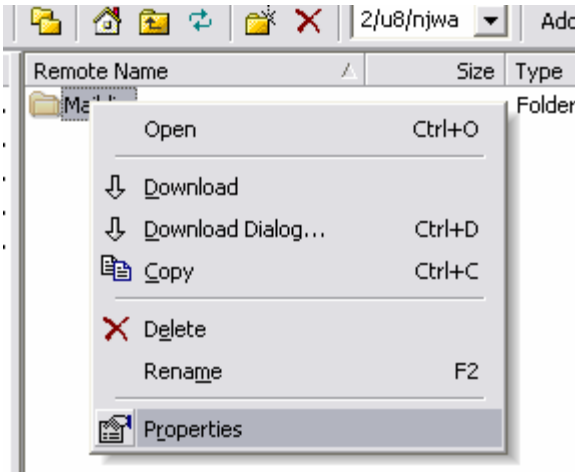


Call this folder:

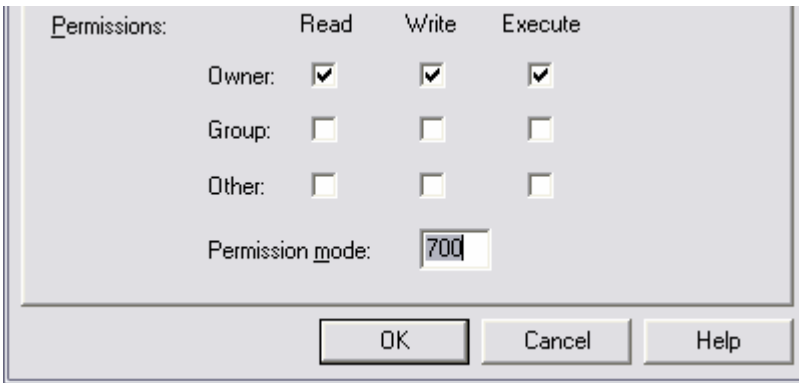
public_html

The "public" and "html" parts should both be in all lower-caps, separated by the underscore character (attained by pressing Shift and the "minus" button, found next to the number 0 on the top keyboard row). When you have entered the folder name, press "Enter" on your keyboard.

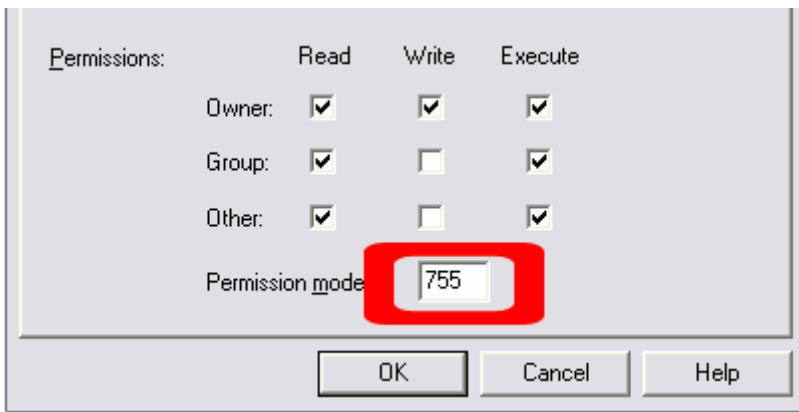
Now that you have created the folder, you will need to set the "permissions" on it. By default, only you (as the owner) will be able to see this folder. In order to make it available to the "public" (such as a class), you will need to change the permission values for the folder. To do this, right-click the folder on the "Remote" side, and click "Properties."



The window that appears will have a section at the bottom listing all of the properties of the folder, and will look similar to this:



As indicated by the checkmarks, permission mode "700" means that only the owner (yourself) has access to these files. Change the value "700" to "755." Checkboxes will be added, as seen in the below image. This will allow anyone with a web browser (and the address to your folder and files) to access your files via the World Wide Web.



When you are done, click "OK." You are now free to use the "public_html" directory are your main folder within your RCI storage space. Any files within "public_html"

can be accessed at the following URL, where “username” is your RCI user account name:

<http://www.rci.rutgers.edu/~username/>

Once it's Created...:

Once you have created your “public_html” directory, you can share files via its contents. For more information on how to upload files to your RCI space, be sure to read the “SSH File Transfer” tutorial. “SSH File Transfer” is the default secure file-transfer program available on all university computers.